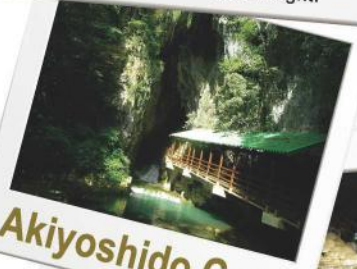




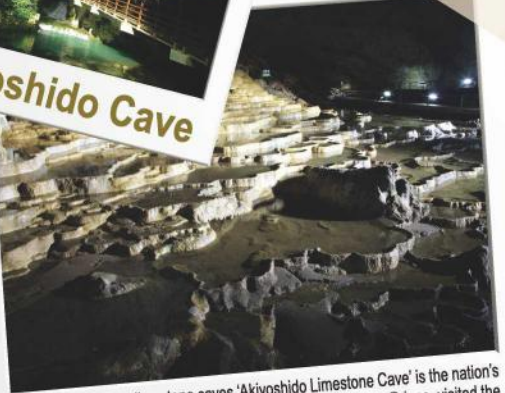
Akiyoshida Plateau



Japan's largest karst plateau. It is a quasi-national park (4,502 ha) and designated as the nation's natural monument (1,384 ha). The limestone that forms its majestic landscape was created about 350 million years ago as coral reefs in the southern sea, which over many years formed the karst plateau that we see today. It is wonderful place to go for a drive with a view of this mysterious natural sight.



Akiyoshido Cave



One of Japan's best limestone caves 'Akiyoshido Limestone Cave' is the nation's natural monument. In 1926, Emperor Showa, then the Crown Prince, visited the cave and named it. The sightseeing course within the cave is about 1km (whole cave and named it. The sightseeing course within the cave is about 1km (whole length of the cave being 8.9 km), and the difference in height from the front entrance to the entrance to Kurotani is about 40 meters. Since the temperature inside is at a steady 17 Celsius throughout the four seasons, it is comfortable inside as it is cool in the summer and warm in the winter. There are many notable sights within the cave, including the Hyakumaizara and the Koganebashira. Enjoy viewing this mysterious space created by underground water.

Akiyoshido Cave admission charges

Category	Adult	High School Student	Junior High School Student	Elementary School Student	
Individual	¥1,300	¥1,300	¥1,050	¥700	
Group	20~99	¥1,100	¥900	¥800	¥550
	100~199	¥1,050	¥800	¥750	¥450
	Over 200	¥1,000	¥750	¥700	¥400

Transport to Akiyoshida Plateau and Akiyoshido Cave

Bus timetable



Karst Taxi



Creatures that inhabit the cave

When you look closely, you will find small creatures, about 1 to 10cm long, on the ceiling and walls, and in the water of the cave. Since many of the creatures in the cave have survived adapting to the cave's particular environment, they have made significant morphological and ecological changes. Most of them are marked by degenerated eyes and pale bodies. Many organisms that live in caves inhabit the cave, including Sinella Akiyoshi and Akiyoshi Pseudoscorpione.



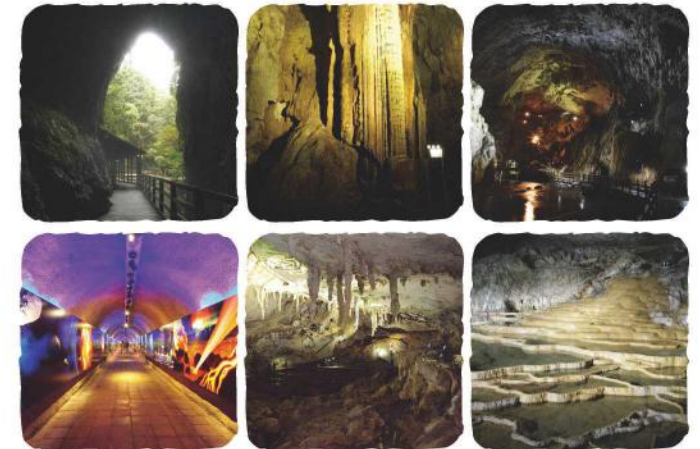
Foothold for intercommunication
Mine City

- Inquiries relating to tourism
Mine City Tourism Association TEL.0837-62-0115 FAX.0837-62-0899
- Inquiries relating to admission charges
Akiyoshida Tourism and Intercommunication Center TEL.0837-62-0305 FAX.0837-62-1422

Quasi-national Park
Akiyoshidai Plateau
Special Natural Monument

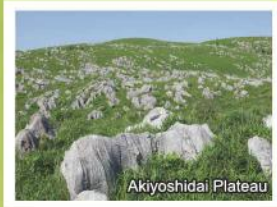


AKIYOSHIDAI / AKIYOSHIDO



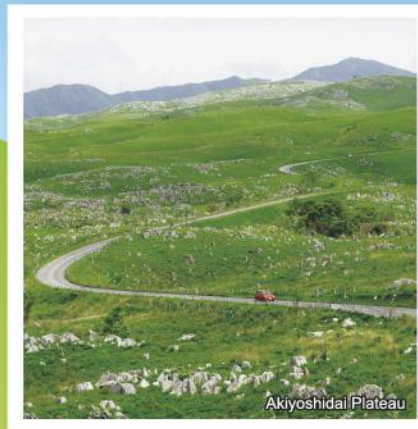
Akiyoshido Cave
Special Natural Monument

Akiyoshidai Plateau Akiyoshido Cave Map



Hagi / Nagato / Taishodo Cave / Safari Land

Akiyoshidai Plateau

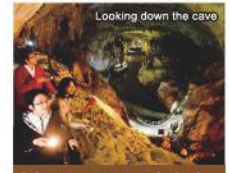


Legend

	Public restrooms		Parking		City operated parking lot (¥500 per entry)
	Restroom for the disabled		Bus stop		Public facility
	Wheelchair rental		Taxi stand		Accommodation
	Multi-purpose restroom		Electric car rapid charger		Stairs
	Hospital		Steep incline		Small steps
	School		Promenade		Tunnel
	City operated parking lot (¥500 per entry)		435 National Route		32 Prefectural road
	Traffic lights		GS Gasoline station		Shrine

Guide to the Adventure Route

The route takes you up the cave from the left side of the Aotenjo area near the front entrance. Put the admission charge in the box and enter with a flashlight. Though the distance is short, you can experience the feeling of an exciting adventure, as you go up ladders and pass through limestone stalactites. It is open to the paying public as long as the water level in the cave is not too high.



Adventure route admission
Akiyoshido Cave admission + ¥300 for both adults and children. Flashlights are available to rent. The route takes about 20 minutes to explore.



A five-minute walk to Karst Viewing Platform. Showing the admission ticket allows you to re-enter to Akiyoshido Cave free of charge.

Advice for wheelchair users

Accompanied by a carer, you can view up to Hyakumaizara from the front entrance of the cave. Please proceed carefully as the slope from the entrance is quite steep.

